

Adobe® Dreamweaver® CS5

Design, develop, and maintain standards-based websites and applications

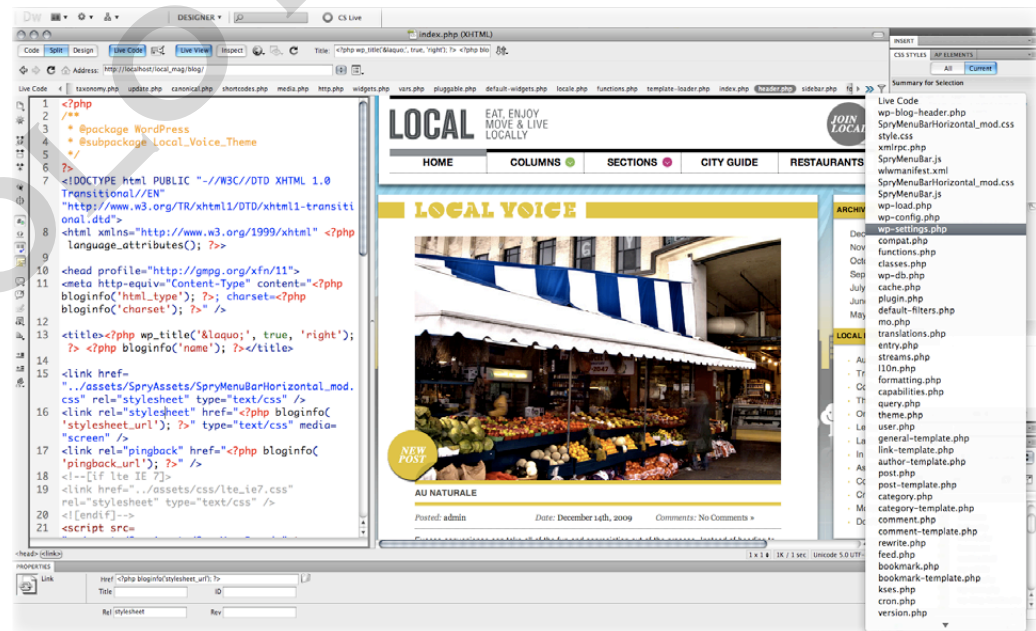


Adobe Dreamweaver CS5 is also available as a component of:

- Adobe Creative Suite® 5 Web Premium
- Adobe Creative Suite 5 Design Premium
- Adobe Creative Suite 5 Master Collection

Work visually or directly in code, develop with dynamic third-party application frameworks like WordPress, Joomla!, or Drupal, and troubleshoot efficiently with CSS inspection tools. Simplify advanced website development with custom PHP code hinting. Work more securely in a team environment with enhanced support for Subversion® software. Integration with Adobe BrowserLab—a new Adobe CS Live online service*—gives you access to fast and accurate browser compatibility previews, including dynamic content and user-generated interactions.

Adobe Dreamweaver CS5 software offers a comprehensive integrated environment in which to design, develop, test, and deploy websites and applications of all flavors—spanning the gamut from the simplest, static HTML page to complete sites built upon complex dynamic application frameworks. Dreamweaver CS5 streamlines both front-end and back-end development tasks with ease. With a set of integrated tools available directly in the authoring environment, Dreamweaver CS5 increases your productivity and virtually eliminates the need for external third-party browser-based tools. Creative professionals can jump-start the design process with updated CSS starter layouts and leverage enhanced CSS features for increased control and creative flexibility. Developers benefit from interacting directly with their database-driven applications and Ajax interface elements, including testing individual states of a page or application throughout the development process. With many compelling new features, Dreamweaver once again raises the bar on productivity and efficiency for web designers and developers alike.



View, access, and edit any file related to your PHP-based site or content management system with Dreamweaver CS5.

* CS Live online services are complimentary for a limited time. See the last page for details and limitations related to all Adobe online services.

Top new features

- Support for PHP-based content management systems (Page 2)
- Dynamically Related Files (Page 3)
- Live View navigation (Page 3)
- Enhanced CSS tools (Page 4)
- Integration with Adobe BrowserLab (Page 5)
- Enhanced support for Subversion (Page 6)
- PHP custom class code hinting (Page 6)
- Site-specific code hints (Page 7)
- Enhanced CSS starter layouts (Page 7)
- Simple site setup (Page 8)
- Integration with Business Catalyst (Page 8)

With Dreamweaver CS5, you can:

Work with the most popular content management systems. Enjoy authoring and testing support for third-party PHP-based content management systems like WordPress, Joomla!, and Drupal. The Dynamically Related Files feature provides direct access to a page's dependent files, even for complex database-driven pages. Live View and enhanced Live Code offer accurate previews of even the most advanced dynamic applications. Use Live View Navigation to follow links to reach different application states, as well as view pages already on a live server, without leaving Dreamweaver CS5.

Visualize and inspect CSS structure. Design and develop websites with more effective CSS inspection tools. With the expanded and more powerful Live View, visually display and interact with the CSS box model with no separate browser-based utilities required. Quickly and easily disable and re-enable CSS properties directly in the CSS Styles panel for simplified testing.

Help ensure cross-browser compatibility. Preview dynamic web pages and local content with multiple viewing, diagnostic, and comparison tools. From Dreamweaver, launch Adobe BrowserLab, a new Adobe CS Live online service*, to preview your web content in multiple browsers and operating systems. Navigate to an application state, such as a shopping cart, or freeze JavaScript-generated interface elements in Dreamweaver CS5 and preview these states in BrowserLab.

Who uses Adobe Dreamweaver?

Professional web designers have made Adobe Dreamweaver the market leader in visual web-authoring tools, using it to create engaging websites for more than 11 years. The flexible development environment in Dreamweaver allows visually oriented designers to work in Design view to create their pages. By beginning with the CSS starter layouts, they can easily insert assets created in Adobe Photoshop® and Adobe Fireworks® software, or interactive elements created in Adobe Flash® Professional software. Using Live View in Dreamweaver, web designers can preview and interact with their pages as they will appear in standards-based browsers, making troubleshooting a more visual experience. Due to the extensible architecture in Dreamweaver, designers who want to add Ajax-based interface elements to their designs without writing any code can download third-party extensions from Adobe Exchange at www.adobe.com/cfusion/exchange.

Web developers, who generally work in a more code-centric environment than their web designer counterparts, rely on professional coding tools in Dreamweaver to build not only static HTML pages, but also advanced web applications using back-end languages such as PHP and Adobe ColdFusion® software. As web developers build sites upon popular content management systems, they will be able to work on individual "pieces" of the dynamic page while seeing the completely assembled page in Live View. Developers working within Code view quickly leverage timesaving features such as code hinting, code completion, and code snippets for their chosen server model as well as for client-side scripts written in JavaScript. Regardless of the language, developers using Dreamweaver are confident that their code is written as they expect—but should a syntax error inadvertently occur, real-time highlighting allows the developer to quickly spot and correct the problem.

Top new features of Adobe Dreamweaver CS5

Support for PHP-based content management systems

With authoring and testing support for third-party PHP-based content management systems (CMS) like WordPress, Joomla!, and Drupal, Dreamweaver CS5 delivers a professional development environment for creating robust websites. Dynamically Related Files provides direct access to the assets necessary for these complex systems, including dynamically generated pages and content. New Live View Navigation allows you to explore the various states of your dynamic applications and pages—even those already deployed on a live server.

* CS Live online services are complimentary for a limited time. See the last page for details and limitations related to all Adobe online services.



Achieve extraordinary web design

Explore the wider world of web design and development with Adobe Creative Suite 5 Web Premium software.

Get a more comprehensive toolset at an appealing price. In addition to Dreamweaver, CSS Web Premium offers the latest versions of Adobe Flash Catalyst™, Flash Professional, Flash Builder™ Standard, Photoshop Extended, Illustrator™, Acrobat® Pro, Fireworks, and Contribute®, so that you can:

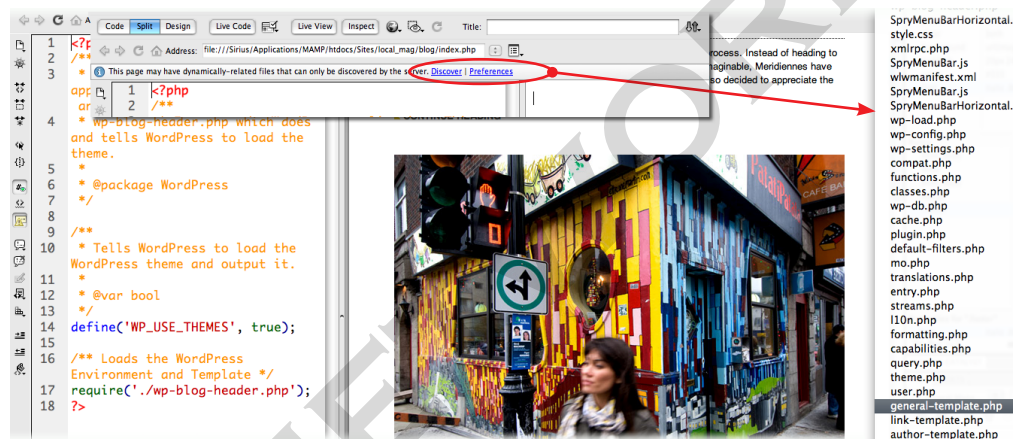
- **Use a comprehensive toolset for the Flash platform.** With Flash Catalyst CS5, Flash Professional CS5, and Flash Builder 4 Standard, create expressive, interactive content that delivers consistently across personal computers, mobile devices, and screens of virtually any size or resolution.
- **Quickly create stunning 3D artwork.** With Photoshop CS5 Extended, take your designs even further by easily building 3D extrusions with Adobe Repoussé.
- **Design crisp graphics for web and mobile devices.** With Illustrator, you can deliver clean, sharp, pixel-aligned artwork and text with enhanced anti-aliasing.

For more information, see *Adobe Creative Suite 5 Web Premium What's New*.

Dynamically Related Files

One of the biggest challenges in developing sites with a web-based content management system such as Wordpress, Joomla!, or Drupal is understanding how a page will look when finally assembled. This is primarily because a page itself is generated dynamically by the CMS from any number of individual pieces, known as includes, and is dependent on server-side logic to be viewed in a browser. The Dynamically Related Files feature in Dreamweaver CS5 helps you access files and update pages faster, as well as simplify management tasks for complex sites. With a single click, you can direct Dreamweaver to discover all of the external files and scripts necessary to assemble the page and display their filenames in the Related Files toolbar. With Live View enabled, Dreamweaver renders the page as it will appear in standards-compliant browsers, complete with dynamic, database-driven content and server- and client-side logic.

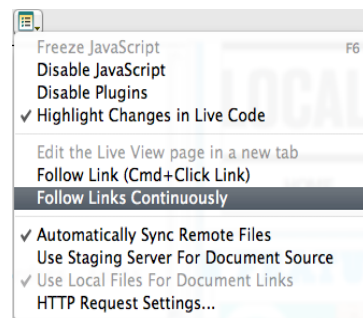
Even the simplest pages in many of the popular CMS frameworks and themes have numerous dynamically related files, making it difficult to find the particular related files you need. With the ability to filter file types or use a wildcard expression, Dreamweaver lets you focus specifically on the files that you want to edit. If a related file doesn't exist locally, Dreamweaver CS5 shows a prompt, and allows you retrieve the file from the server with a single click.



With a single click, Dreamweaver CS5 can discover all the related files necessary to render the page.

Live View navigation

Live View navigation expands upon the Live View feature introduced in Dreamweaver CS4 and allows you to quickly and accurately check your code and your CMS design themes. With Live View navigation enabled, not only can you view a page as it is rendered in standards-compliant browsers, but links are active, allowing you to interact with server-side applications and dynamic data. In addition to the rendered Live View of the page, Live Code highlights changes as they happen, allowing you to quickly locate the dynamically loaded data or code changes triggered by JavaScript. At any stage of development, Live View navigation also allows you to enter a URL to inspect pages served from a live web server and easily edit pages you have browsed to if they exist in one of your locally defined sites.



With Follow Links Continuously enabled, Live View works like a browser, allowing you to click on links and view states of your web applications.

Enhanced CSS inspection tools

By separating page markup (HTML) from the actual presentation of the content (CSS), web designs have become much more flexible and adaptable. However, for seasoned professionals and novices alike, there is a need to understand how page elements relate to one another, as well as to have the freedom to iterate and experiment with their page designs in real time. With enhanced CSS tools and Live View, Dreamweaver CS5 gives you more control without having to leave your editing environment, even giving you the ability to view any link state and change text size—tasks that previously required a browser.

The Inspect command

Develop CSS-based designs more efficiently and accurately by visually displaying the CSS box model properties—including padding, border, and margin—in detail, without reading code or requiring a separate third-party utility such as Firebug. For designers who are new to web design or looking to expand their understanding of CSS, Dreamweaver CS5 makes it much easier to learn about the properties of an HTML element. In the past, external browser-based tools were required to visually identify page elements and their related CSS styles. This tedious process involved previewing the page in a browser, enabling the tool or plug-in, and then exploring the document to find the properties you wanted to change. Because this activity occurred in a browser, you had to keep track of all the changes made, and then copy and paste them into your web documents in Dreamweaver. In Dreamweaver CS5, you can use the Inspect command in tandem with Live View to quickly identify HTML elements and their associated CSS styles, giving you immediate feedback.

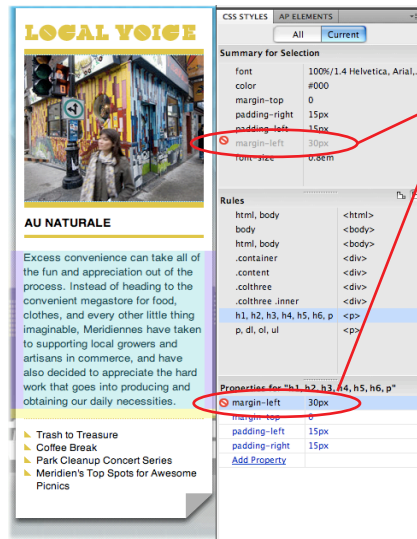


Dreamweaver CS5 highlights box model properties with colors so you can visually inspect individual page elements.

When an element is highlighted in Live View, its corresponding CSS rules and cascade are exposed in the CSS Styles panel where they can be edited in real time, removing the need to copy from an external tool and paste the results into Dreamweaver. When inspecting in Split view, the corresponding HTML code—including the tag—is immediately selected.

CSS enable/disable

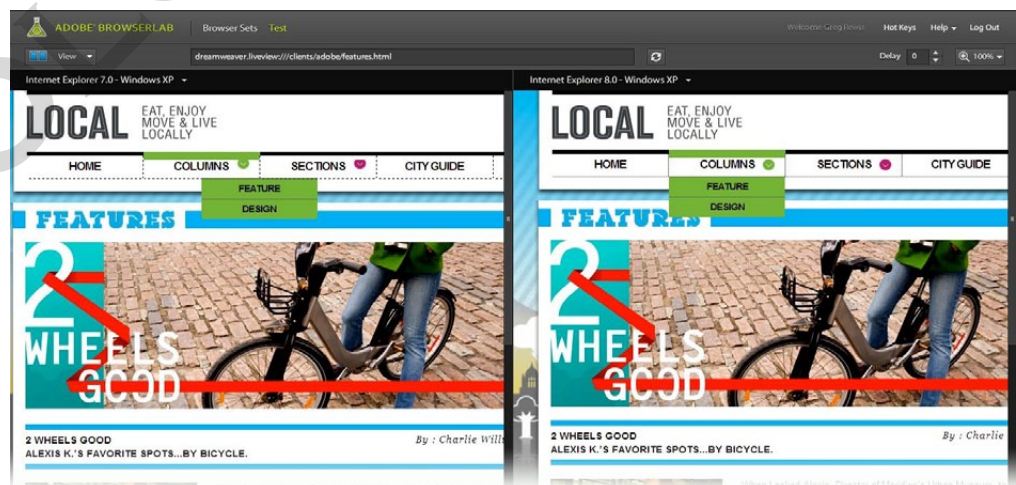
Quickly and easily disable and re-enable CSS properties directly from the CSS Styles panel in Dreamweaver CS5. Disabling a CSS property simply comments out the specified property without actually deleting it, and the affected property is no longer rendered. This convenient option for toggling CSS properties on and off, coupled with the ability to inspect CSS, allows you to remain in your editing environment throughout the development process, eliminating the time-consuming process of previewing in the browser and troubleshooting with browser-based tools.



Dreamweaver CS5 gives you the freedom to experiment with and troubleshoot CSS by toggling individual CSS properties on and off as you view the box model changes in color.

Integration with Adobe BrowserLab

Dreamweaver CS5 integrates with Adobe BrowserLab, one of the new CS Live online services*, which provides a fast and accurate solution for cross-browser compatibility testing. Whether you are new to web design or a seasoned professional, you can use BrowserLab to preview web pages and local content with multiple viewing and comparison tools, customizing sets of browsers to meet your project's requirements. While working within Dreamweaver CS5, you can interact with your page in Live View, including the ability to freeze JavaScript-triggered interactions, and then send this "snapshot" of the page directly to BrowserLab for an accurate preview in the specific browsers and operating systems you've chosen. For traditional designers who want to understand how the various browsers and browser versions render their content, Onionskin view in BrowserLab allows you to overlay the same page in two different browsers or browser versions to easily spot differences.

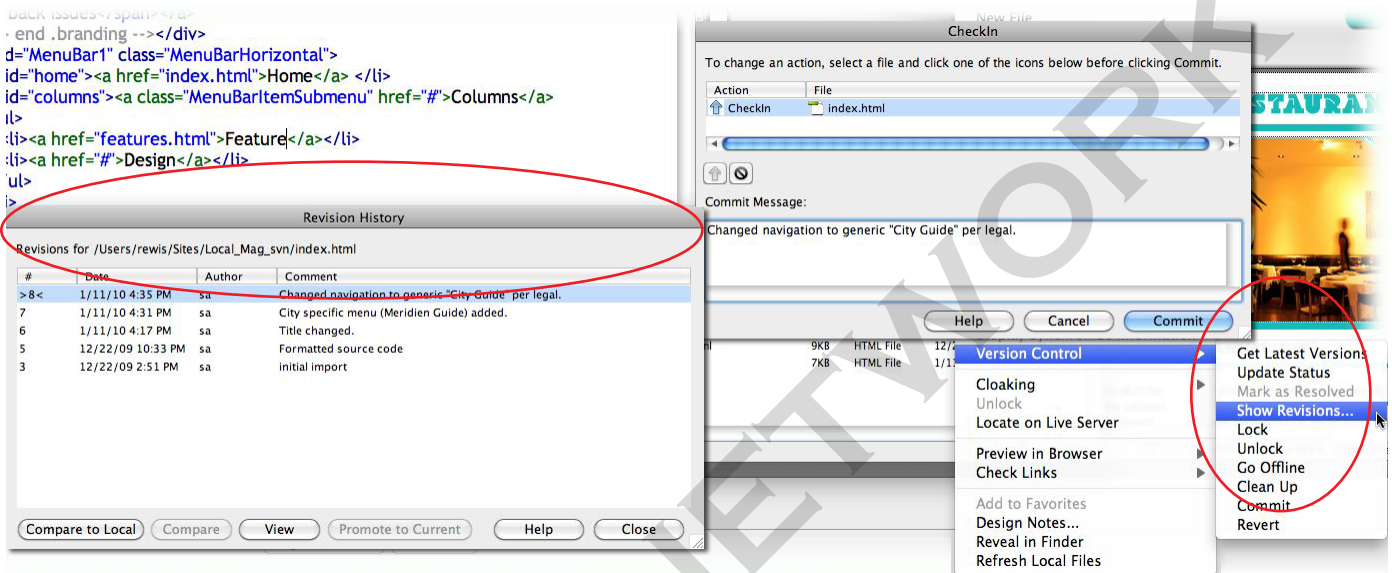


Adobe BrowserLab allows you to compare your web pages and applications in multiple browsers without having the specific operating system or browser installed on your local computer.

* CS Live online services are complimentary for a limited time. See the last page for details and limitations related to all Adobe online services.

Enhanced support for Subversion

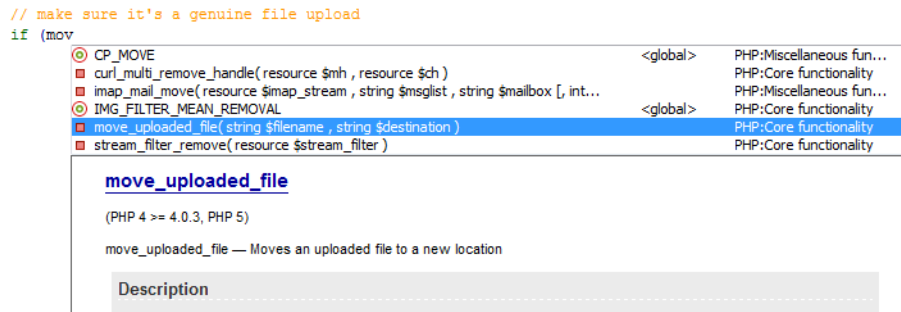
With Dreamweaver CS5, you can manage files more effectively in collaborative, version-controlled environments with enhanced support for Subversion, an open-source version-control system. In Dreamweaver CS4, Subversion support was limited to the most basic functions of locking and unlocking files and generating status updates. Dreamweaver CS5 expands support for Subversion, allowing you to move, copy, and delete files locally, and then synchronize changes with your remote SVN repository. The new Revert command allows you to quickly correct tree conflicts or roll back to a previous version of a file. From the Repository View of the Files panel in Dreamweaver CS5, you can reduce clutter by directly performing `svn:ignore` commands to hide files you don't need to access. To ensure future compatibility, the built-in Subversion libraries in Dreamweaver CS5 are designed to be updated by the Adobe Extension Manager. As newer versions of the Subversion libraries become available, they will be made available to the public as free extensions at Adobe Exchange at www.adobe.com/cfusion/exchange.



Dreamweaver CS5 enhances support for Subversion, the open-source version-control system, with new commands that can give you increased control and confidence.

PHP custom class code hinting

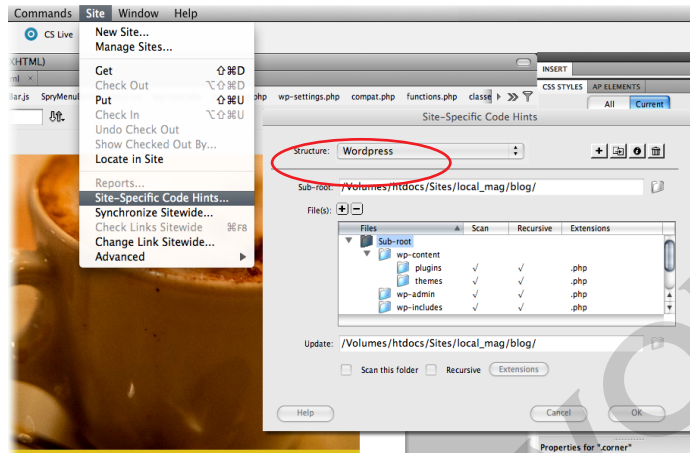
Display proper syntax for PHP functions, objects, and constants to help you write code more accurately. Dreamweaver CS5 provides enhanced PHP code hinting on the fly by dynamically parsing PHP code and updating it as you type—even with code that hasn't yet been saved to disk. The code hints for PHP core functions and objects include the function signature, the module that defines the function, a description tooltip that mentions the PHP versions in which it is available, the method and parameter descriptions, and a link to the PHP.net manual page. Code hinting also works with your own custom functions and classes, as well as with third-party frameworks such as the Zend Framework. Dreamweaver CS5 dynamically highlights errors and provides alerts in the Information bar to help you more efficiently find and fix errors in your PHP code.



Code hinting for core PHP functions includes descriptions and information from the PHP manual.

Site-specific code hints

As sites become more and more customized, especially those built using content management systems and/or custom plug-ins, the need to edit customized code efficiently becomes more important than ever. Site-specific code hints within Dreamweaver help you to more efficiently handle PHP coding tasks on a site-by-site basis. Theme files for blogs and other custom PHP files and directories can be included (or excluded) to customize the coding environment of Dreamweaver CS5 when working with third-party PHP libraries and CMS frameworks such as WordPress, Drupal, and Joomla! and others. For robust code hinting, you can also specify files and even folders located outside of the defined site root.



Configure Dreamweaver to provide code hints for specific to your site's structure, with the most common content management systems automatically recognized.

Enhanced CSS starter layouts

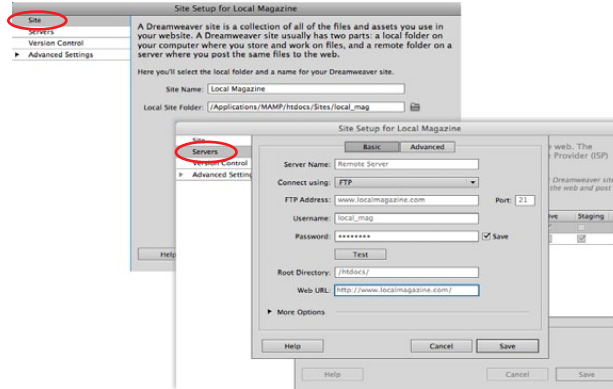
Jump-start your standards-based website design with updated and simplified CSS starter layouts. Based on user feedback and constantly evolving CSS best practices, the CSS starter layouts have been completely rewritten. For example, complex descendent selectors have been removed in favor of simplified, easy-to-understand classes, and the overall structure of the documents has been revamped. To help ensure success with the new layouts, instructions and comments are included both in the CSS code and the text of the document. Regardless of your experience, CSS starter layouts speed your development time by providing a variety of solid structures upon which to build your designs. For print designers and others just making the move to web design, CSS starter layouts can dramatically speed up the learning process.

<p>Link one Link two Link three Link four</p> <p>The above links demonstrate a basic navigational structure using an unordered list styled with CSS. Use this as a starting point and modify the properties to produce your own unique look. If you require flyout menus, create your own using #a Spry menu#, a #menu widget from Adobe's Exchange# or a variety of other solutions.</p>	<h3>Instructions</h3> <p>Be aware that the CSS for these layouts is heavily commented. If you do most of your work in Design view, have a peek at the code to get tips on working with the CSS for the fixed layouts. You can remove these comments before you launch your site using this #free extension# (Can we link to David's extension? It's highly useful and I actually wish it was part of DW).</p> <h3>Clearing</h3> <p>Because all the columns are floated, this layout uses a clear:both declaration in the .footer rule. This clearing technique forces the .container to understand where the columns end in order to show any borders or background colors you place on the .container. If your design requires you to remove the .footer from the .container, you'll need to use a different clearing method. The most reliable will be to add a <br class="clearfloat" /> or <div class="clearfloat"> </div> after your final floated column (but before the .container closes). This will have the same clearing effect. You can read more at #whatever link we decide to place here#.</p> <h3>Footer</h3> <p>Adding a footer following overflow:hidden clearing.</p>	<p>Insert_logo (20% x 90)</p> <p>Link one Link two Link three Link four</p> <p>The above links demonstrate a basic navigational structure using an unordered list styled with CSS. Use this as a starting point and modify the properties to produce your own unique look. If you require flyout menus, create your own using #a Spry menu#, a #menu widget from Adobe's Exchange# or a variety of other javascript or CSS solutions.</p> <h3>Instructions</h3> <p>Be aware that the CSS for these layouts is heavily commented. If you do most of your work in Design view, have a peek at the code to get tips on working with the CSS for the fixed layouts. You can remove these comments before you launch your site using this #free extension# (Can we link to David's extension? It's highly useful and I actually wish it was part of DW).</p> <h3>Clearing Method</h3> <p>Because all the columns are floated, this layout uses a clear:both declaration in the .footer rule. This clearing technique forces the .container to understand where the columns end in order to show any borders or background colors you place on the .container. If your design requires you to remove the .footer from the .container, you'll need to use a different clearing method. The most reliable will be to add a <br class="clearfloat" /> or <div class="clearfloat"> </div> after your final floated column (but before the .container closes). This will have the same clearing effect. You can read more at #whatever link we decide to place here#.</p> <h3>Logo Replacement</h3>	<h3>Backgrounds</h3> <p>By nature, the background color on any div will only show for the length of the content. If you'd like a dividing line instead of a color, place a border on the side of the .content div (but only if it will always contain more content). Otherwise, use a #faux column technique described here#.</p>
---	--	--	---

CSS starter layouts are now color-coded—liquid layouts are in shades of blue, and fixed layouts are in earth tones.

Simple site setup

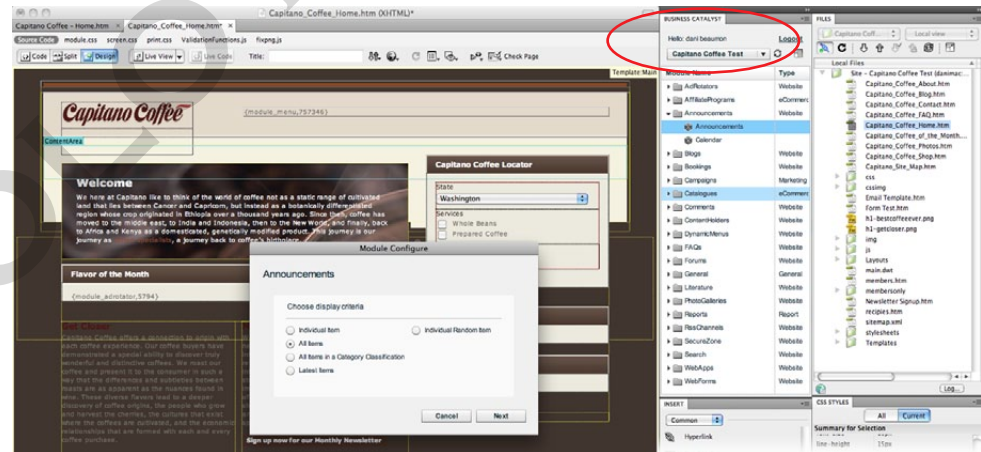
To help make setup faster and easier, the Site Definition dialog box has been extensively redesigned, implementing many improvements suggested by web designers and developers who use Dreamweaver on a regular basis. You can start with as much or as little detail as you like—even with just a site name and local site folder—and Dreamweaver will prompt you for the remaining details as they're needed as you build your site. For more advanced projects, you can specify multiple servers with custom names to utilize staged, networked, or other server types.



To start a new website, you can give Dreamweaver as little information as a site name and where your local files are stored, or all the details about your site's servers. If Dreamweaver needs more information to carry out a task, it will prompt you.

Integration with Adobe Business Catalyst

In today's competitive environment, your clients demand more from their websites—they want true business results. With the Adobe Business Catalyst® extension for Dreamweaver (available separately and in English only) and the Business Catalyst online service* (available separately) you can deliver powerful online businesses without programming and at a fraction of the time and cost—all from within your familiar Dreamweaver workspace. Business Catalyst is an online service that can replace as many as five or more applications and tools with a single central platform for web designers that works hand in hand with Dreamweaver through the Business Catalyst extension for Dreamweaver. Using the unified platform and without back-end coding, you can build everything from amazing websites to powerful online stores, and from beautiful brochure-ware sites to lead generating mini-sites.



Smooth integration between Adobe Business Catalyst and Dreamweaver CSS5 makes it simple to maintain your online businesses without leaving the familiar Dreamweaver environment.

* CS Live online services are complimentary for a limited time. See the last page for details and limitations related to all Adobe online services.

System requirements

Windows*

- Intel® Pentium® 4 or AMD Athlon® 64 processor
- Microsoft® Windows® XP with Service Pack 2 (Service Pack 3 recommended); Windows Vista® Home Premium, Business, Ultimate, or Enterprise with Service Pack 1; or Windows 7
- 512MB of RAM
- 1GB of available hard-disk space for installation; additional free space required during installation (cannot install on removable flash-based storage devices)
- 1280x800 display with 16-bit video card
- DVD-ROM drive
- Broadband Internet connection required for online services*

Mac OS

- Multicore Intel® processor
- Mac OS X v10.5.7 or v10.6
- 512MB of RAM
- 1.8GB of available hard-disk space for installation; additional free space required during installation (cannot install on a volume that uses a case-sensitive file system or on removable flash-based storage devices)
- 1280x800 display with 16-bit video card
- DVD-ROM drive
- Broadband Internet connection required for online services*

For updates to system requirements, visit www.adobe.com/go/dreamweaver_systemreqs.

Still using Dreamweaver CS3?

If you still use Dreamweaver CS3, upgrading to Dreamweaver CS5 also gives you the chance to catch up on all the great features added in Dreamweaver CS4. These include:

- **Live View and Live Code.** Design your web pages under real-world browser conditions with Live View while still retaining direct access to the code. Changes to the code are reflected in the rendered display. Live Code enables you to see the generated source code as a browser would, including dynamic content or code changes as a result of JavaScript. The Freeze JavaScript command lets you freeze the state of the page to more easily style complex interface elements.
- **New user interface.** Work faster and smarter across Adobe Creative Suite components with a shared user interface design. Use the Workspace Switcher to quickly toggle from one work environment to the next.
- **Fast image updating with Smart Objects.** Insert Adobe Photoshop (PSD) files as Smart Objects in Dreamweaver, and then update the images with one click whenever the original files change—no more need to resave and reinsert images. Images are automatically web-optimized in your preferred HTML-friendly format.
- **Convenient access to the code and CSS styles you need.** Choose any file in the Related Files toolbar to simultaneously see its source in Code view and the parent page in Design view. Quickly create CSS rules and control their specificity with the redesigned New CSS Rule dialog box. Use Code Navigator to quickly access CSS source code that affects your current selection.
- **Enhanced JavaScript support.** With the addition of JavaScript code hinting and support in Code view for your custom functions, your productivity when writing JavaScript is increased.

About Adobe Systems Incorporated

Adobe is the world's leading provider of software solutions to create, manage, and deliver high-impact, reliable digital content. For more information, visit www.adobe.com.

Expected ship date

Second quarter 2010

For more information

Product details:

www.adobe.com/dreamweaver

* This product may allow you to extend its functionality by accessing certain features that are hosted online, including CS Live online services ("Online Services"), provided you have a high-speed Internet connection. The Online Services, and some features thereof, may not be available in all countries, languages, and/or currencies and may be discontinued in whole or in part without notice. Use of the Online Services is governed by separate terms of use and by the Online Privacy Policy, and access to some services may require user registration. Some Online Services, including services that are initially offered at no charge, may be subject to additional fees and require a separate subscription. For more details and to review the applicable terms of use and Online Privacy Policy, visit www.adobe.com. For more information about CS Live online services, see www.adobe.com/go/cs.live.



Adobe

Adobe Systems Incorporated
345 Park Avenue
San Jose, CA 95110-2704
USA
www.adobe.com

Adobe, the Adobe logo, Acrobat, ActionScript, ColdFusion, Contribute, Creative Suite, Dreamweaver, Fireworks, Flash, Flash Builder, Flash Catalyst, Illustrator, and Photoshop are either registered trademarks or trademarks of Adobe Systems Incorporated in the United States and/or other countries. AMD Athlon and AMD Phenom are trademarks or registered trademarks of Advanced Micro Devices, Inc. Mac OS is a trademark of Apple, Inc., registered in the U.S. and other countries. Intel, and Pentium are trademarks of Intel Corporation in the U.S. and other countries. PowerPC is a trademark of International Business Machines Corporation in the United States, other countries, or both. Microsoft, Windows, and Windows Vista are either registered trademarks or trademarks of Microsoft Corporation in the United States and/or other countries. All other trademarks are the property of their respective owners.

© 2010 Adobe Systems Incorporated. All rights reserved. 02/10