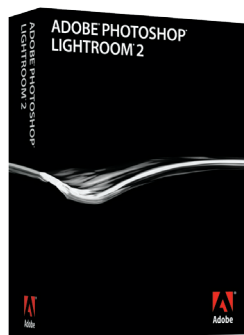


# ADOBE® PHOTOSHOP® LIGHTROOM® 2

## SIMPLIFY PHOTOGRAPHY FROM SHOOT TO FINISH



### Adobe Photoshop Lightroom 2 is the perfect complement to Adobe Photoshop software.

Use Lightroom to quickly transfer images to your computer, manage and adjust them, and present them in print, in slide shows, or on the web. Switch to Photoshop at any time to perform detailed, pixel-level editing, and then return to Lightroom to see the changes automatically applied.

Adobe Photoshop Lightroom 2 software is essential for today's digital photography workflow. Now you can quickly import, process, manage, and showcase your images—from one shot to an entire shoot. With Lightroom 2, you spend less time in front of the computer and more time behind the lens.

### Work with a tool focused on photographers' needs

Adobe Photoshop Lightroom 2 is designed expressly for both amateur and professional photographers. From its elegant, uncluttered interface to its carefully tailored tools and features, Lightroom helps you process photographs faster, giving you more time to shoot. With the new and enhanced features in Lightroom 2, you can find the photos you want faster, make more accurate adjustments, and easily present your work in more ways than ever before.

### Accelerate your workflow

Lightroom is a nimble tool that moves you efficiently through every step of your workflow, from image capture to client presentation. Use flexible tools and features to manage the processing of large volumes of photographs. Customize a wide range of importing, renaming, and metadata stamping functions to suit your needs. Keep track of the changes you've made to images, including alternate versions, easily and automatically with the History panel. And when you're ready to present your work to clients, easily assemble and output high-quality printed contact sheets, online web galleries, and slide shows, or upload your photos to popular online photo-sharing sites.

### Use it your way

Lightroom is adaptable and compatible with the way you work, most of the hardware you use, and open standards, so you're less likely to be limited by proprietary systems and formats. Lightroom runs on both Microsoft® Windows® and Mac OS. Work with more than 190 camera raw file formats, as well as JPEG, TIFF, and PSD files. Convert your images to the universal DNG format without loss of image quality. Store your photographs in the Lightroom Library—even if they're located on offline media. Using Lightroom for developing images, together with Adobe Photoshop for retouching, digital photographers now have the essential photography software toolkit. Take advantage of robust metadata support and advanced keywording capabilities help you tag and find the photographs you need quickly and easily. From developing images to presenting them, Lightroom together with Photoshop provides digital photographers with the essential photography software toolkit.

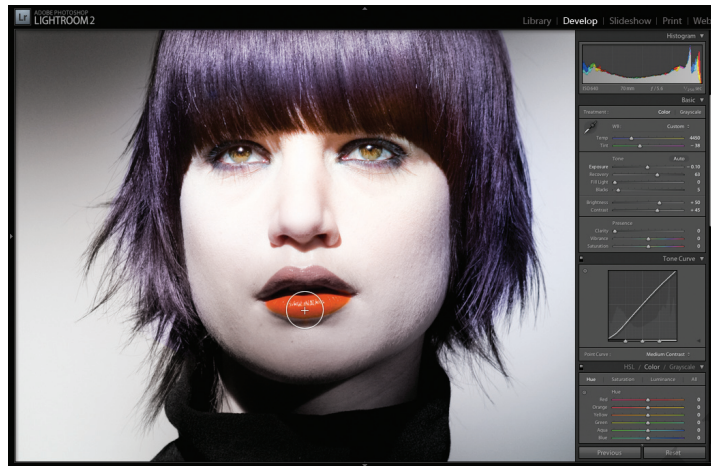
## System requirements

### Windows®

- Intel® Pentium® 4 processor
- Microsoft® Windows XP with Service Pack 2 or Windows Vista® Home Premium, Business, Ultimate, or Enterprise (certified for 32-bit and 64-bit editions)
- 1GB of RAM
- 1GB of available hard-disk space
- 1,024x768 display
- CD-ROM drive

### Mac OS

- Mac OS X v10.4 or 10.5
- PowerPC® G4 or G5 or Intel processor
- 1GB of RAM
- 1GB of available hard-disk space
- 1,024x768 display
- CD-ROM drive



Adobe Photoshop Lightroom 2, designed for photographers, features an elegant, uncluttered interface that puts just the tools you need at your fingertips.

## The top reasons to buy Adobe Photoshop Lightroom

### Enhance specific areas of a photo

Enjoy more flexible, accurate enhancements by targeting a specific area for dodging and burning.

### Quickly find any photo

Sort and filter large volumes of photos using powerful metadata filters to quickly find just the photo you want.

### Automatically import and process your way

Import and process large volumes of photos according to your customized settings. Rename files, organize them into folders, add metadata, and convert file formats for an entire shoot simultaneously.

### Native 64-bit architecture

Utilize the advanced memory-handling capabilities on the latest Mac OS and Windows systems.

### Work smoothly with Adobe Photoshop software (sold separately)

Enjoy tight integration with Adobe Photoshop software for streamlined use of Smart Objects, panorama stitching, high dynamic range (HDR) functionality, multiple layer workflow, and more. See your edits automatically updated in Lightroom.

### Multiple monitor support

Add a second monitor and enjoy more room to work. Support for multiple monitors allows you to configure your workspace to manage image workflow and presentation more efficiently.

### Be productive quickly

Ease your learning curve with task-oriented modules that speed you through typical workflow tasks by placing just the tools you need at your fingertips.

### Edit nondestructively

Enjoy robust support for more than 190 camera raw file formats, and experiment with confidence. Adjustments you make to images in Lightroom won't alter the original data, whether you're working on a JPEG, TIFF, DNG, or camera raw file.

### Easily show off your photos online

Create dynamic web galleries based on Adobe Flash® technology without programming. In a few clicks, you can assemble and upload an interactive gallery to your website. Or easily upload your images to popular photo-sharing sites directly from Lightroom.

### For more information

For more details about Adobe Photoshop Lightroom, visit [www.adobe.com/products/photoshoplightroom](http://www.adobe.com/products/photoshoplightroom).



Adobe

Adobe Systems Incorporated  
345 Park Avenue  
San Jose, CA 95110-2704  
USA  
[www.adobe.com](http://www.adobe.com)

Adobe, the Adobe logo, Flash, Lightroom, and Photoshop are either registered trademarks or trademarks of Adobe Systems Incorporated in the United States and/or other countries. Mac OS is a trademark of Apple Inc., registered in the U.S. and other countries. Intel and Pentium are trademarks of Intel Corporation in the United States and other countries. PowerPC is a trademark of International Business Machines Corporation in the United States, other countries, or both. Microsoft, Windows, and Windows Vista are either registered trademarks or trademarks of Microsoft Corporation in the United States and/or other countries. All other trademarks are the property of their respective owners.

© 2008 Adobe Systems Incorporated. All rights reserved. Printed in the USA.  
95010723 6/08